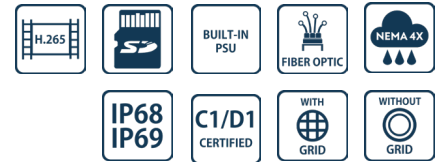


## NEXT THERMAL PTZ CAMERA

INNOVATIVE EXPLOSIONPROOF THERMAL PTZ CAMERA STATION

HAZARDOUS AREA

- **INNOVATIVE PRODUCT, BEST IN CLASS TECHNOLOGY**
- CLASS1/DIV1 EXPLOSIONPROOF PTZ FOR HAZARDOUS LOCATIONS
- AISI316L STAINLESS STEEL CONSTRUCTION
- THERMAL: 640X512 RESOLUTION, 9HZ OR 25HZ, LWIR
- WIDE RANGE OF THERMAL LENSES
- VERY LOW POWER CONSUMPTION
- EASY MAINTENANCE
- IP68/69, NEMA 4X
- OPTIONAL BUILT-IN FIBER MEDIA CONVERTER
- OPTIONAL BUILT-IN 120VAC POWER SUPPLY



### TECHNICAL SPECIFICATIONS

#### GENERAL & MECHANICAL

<b>Dimensions</b>	See dimensions drawings
<b>Operating Temperature</b>	CANADA: -50°C +60°C, +75°C peak (-58°F +140°F, +167°F peak) USA: -25°C +60°C, +75°C peak (-13°F +140°F, +167°F peak)
<b>Construction</b>	AISI316L Stainless Steel
<b>Finish</b>	Electro-polished
<b>Window</b>	Germanium HC coated 50mm (Thermal)
<b>Mounting</b>	4x Ø11 on 195 PCD
<b>Cable entries</b>	1x M25x1,5 or 3/4in (adapter) (second cable entry available on demand)
<b>Pan Angle</b>	360° (continuous rotation)
<b>Pan Speed</b>	0 – 40°/second
<b>Pan Torque</b>	20Nm (limited with safety device)
<b>Tilt Angle</b>	180° (+/-90°)
<b>Tilt Speed</b>	0 – 20°/second
<b>Tilt Torque</b>	20Nm (limited with safety device)
<b>Rotation angle</b>	Electronically adjustable limit switches
<b>Backlash</b>	<0,1°
<b>Max preset accuracy</b>	0,04°
<b>Control protocol</b>	Pelco D (RS485)
<b>Weight</b>	Unit: 68lb / Package: 79lb

#### ELECTRICAL

<b>Temperature Climatization</b>	
<b>- Camera Housing</b>	T[°C] ON = 54 ± 7°F (12 ± 4°C) T[°C] OFF = 68°F ± 5°F (20 ± 3°C)
<b>- Gear motors</b>	Electronically controlled de-icing
<b>Available voltages</b>	24VAC, 120VAC (+/-10%) 24VDC available on request
<b>Power consumption</b>	•10W min (stationary and heaters/wiper off) •85W Operating (no heaters) •130W MAX (low temperature operation)

#### CERTIFICATIONS

<b>Ingress Protection</b>	IP66/IP67/IP68/IP69 (EN 60529), NEMA 4X
<b>IK Classification</b>	IK10 on all sides except for the front glass, which is rated IK08
<b>Rating</b>	Class I, Division 1, Groups A, B, C and D T6/T5/T4 -50°C ≤ Tamb ≤ +60°C/75°C/80°C (only for Canada) Class I, Division 1, Groups B, C and D T5/T4 -25°C ≤ Tamb ≤ +60°C/75°C/80°C (only for US) Class II/III, Division 1, Groups E, F and G T5/T4 -40°C ≤ Tamb ≤ +60°C/80°C (for US/Canada) Class I Zone 1, AEx db IIC T6/T5/T4 Gb Ta=-50°C to +60°C/+75°C/+80°C Class I Zone 21, AEx tb IIIC T85°C/T100°C/T135°C Gb Ta=-50°C to +60°C/+75°C/+80°C
<b>North American Standards</b>	FM 3600; FM 3615; FM 3616; FM 3810; ANSI/UL 50E; ANSI/UL 60079-0; ANSI/UL 60079-1; ANSI/UL 60079-31; ANSI/IEC 60529; ANSI/UL 61010-1 CSA C22.2 No. 0.4; CSA C22.2 No. 0.5; CSA C22.2 No. 25; CSA C22.2 No. 30; CSA C22.2 No. 94; CSA C22.2 No. 60079-0; CSA C22.2 No. 60079-1; CSA C22.2 No. 60079-31; CSA C22.2 No. 60529; CSA C22.2 No. 61010-1
<b>EMC</b>	EN 55035; EN/IEC 61000-6-4; EN/IEC 61000-3-2; EN/IEC 61000-3-3; EN/IEC 61000-6-2; CISPR-32; CISPR-35
<b>LVD</b>	EN/IEC 62368-1
<b>RoHS</b>	2011/65/EU + 2015/863/EU (RoHS 3)
<b>WEEE</b>	2012/19/EU

#### CAMERA (THERMAL)

<b>Sensor</b>	VOx Microbolometer, 12µm, uncooled
<b>Resolution</b>	640x512 pixels
<b>Spectral Band</b>	LWIR 8-14µm
<b>Compression</b>	H.264, MJPEG
<b>Frame Rate</b>	9Hz (9fps) or 25Hz (25fps)

**INNOVATIVE EXPLOSIONPROOF THERMAL PTZ CAMERA STATION**

<b>Focus Settings</b>	Fixed manual focus, minimum focus distance
<b>Sensitivity</b>	≤50mK@25°, F/1.0
<b>Shutter type</b>	NUC
<b>Fire Detection</b>	Yes
<b>Image settings</b>	Black hot, White hot, Color Palette (18 types)
<b>Event Actions</b>	Recording/Capture/Sending mail/PTZ linkage/Alarm output
<b>Analytics</b>	Line intrusion, cross-border, and region intrusion
<b>Alarm Trigger</b>	network disconnection, IP address conflict, full memory, memory error, illegal access and abnormal detection
<b>Edge Recording</b>	Yes
<b>Gain</b>	- Digital Filter and Imaging Denoising - Digital Detail Enhancement

Lens	FOV (HxV)	Min Focus Distance
	640x512	
9.1mm	48.6°x38.6°, F1.0	0.5m
13mm	32.9°x26.6°, F1.0	0.5m
19mm	22.9°x18.4°, F1.0	0.5m
25mm	17.4°x14.0°, F1.0	1m
35mm	12.5°x10.0°, F1.0	1.5m
55mm	8.6°x6.4°, F1.0	2m

**NETWORK**

<b>Interface</b>	100BASE-TX or 100BASE-FX/1000BASE-X (fiber)
<b>Security</b>	- User Authentication/HTTPS
<b>ONVIF</b>	ONVIF S
<b>Protocols</b>	- TCP, UDP, RTP, RTSP, RTCP, HTTP, HTTPS, ICMP, FTP, SMTP, DHCP, IGMP, QoS, NTP, DNS

**FIBER MEDIA CONVERTER**

<b>Interface</b>	100 Base-FX/1000BASE-X
<b>Cabling</b>	Singlemode (9/125 μm) /two fibers/SC connector
<b>Maximum Distance</b>	20km
<b>Wavelength</b>	1310 nm

**MODELS**

<b>TXPUS1Tlxx-IP-S</b>	New Generation Explosionproof PTZ IP camera station, 24VAC
<b>TXPUS2Tlxx-IP-S</b>	New Generation Explosionproof PTZ IP camera station, 120VAC
<b>TXPUS1Tlxx-SM-S</b>	New Generation Explosionproof PTZ IP camera station, SM FO Media Converter, 24VAC
<b>TXPUS2Tlxx-SM-S</b>	New Generation Explosionproof PTZ IP camera station, SM FO Media Converter, 120VAC

(+) Gridless version available on request

To order the required camera configuration, please replace "Tlxx" with the TI number indicated in the table below.

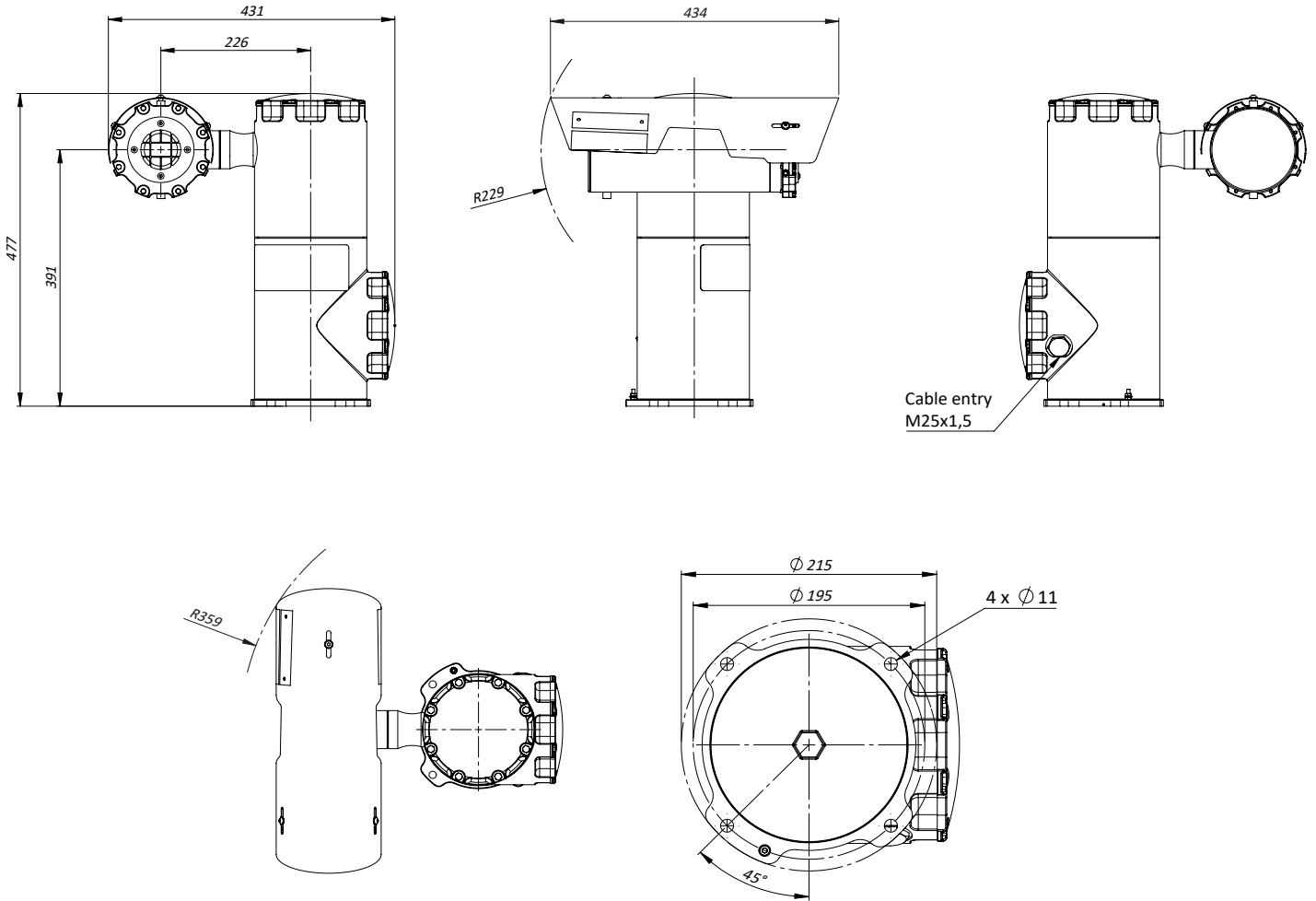
**CAMERA MODEL SELECTION (TlXX)**

	640x512	
	9Hz	25Hz
9.1mm	TI22	TI32
13mm	TI23	TI33
19mm	TI24	TI34
25mm	TI25	TI35
35mm	TI26	TI36
55mm	TI27	TI37

**ACCESSORIES**

<b>SSBK-L</b>	Wall mounting bracket
---------------	-----------------------

DIMENSIONS



Dimensions in millimetres - Tolerances according QMS - Design and products specifications subject to change without notice - rev. 20241021