



K-Comm Instant Voice Communication



The Leading Secure Push to Talk Solution

Push to Talk - Group Messaging - Location Tracking



Designed for government and business enterprise use, K-Comm includes a rich feature set supporting the needs of the serious work force.



- Government
- Military
- Utilities
- Healthcare
- Public Safety
- Construction
- Transportation
- Education

K-Comm establishes a new dimension in Push-To-Talk service, providing a host of previously unavailable capabilities, including:

- Wireless Carrier Independent and Cross-Carrier Capable
- Fastest Call Setup and Best Voice Quality
- Instant Secure IVC Voice and Group Text Communications
- Live and Historical (Bread Crumb) Location Tracking
- ISSI Integration for P25 Networks
- AIS Integration for DMR Networks
- In-Call Preemption and Priority based call override
- Late Join and Re-Join on Group Calls
- Presence for Groups and Individual Contacts
- Complete user account management via the handset or web
- PC Based Dispatch Client for Windows and Linux
- SIPREC Interface for professional third-party recording systems
- Integration with Microsoft Active Directory



K-Comm



Contacts Tab



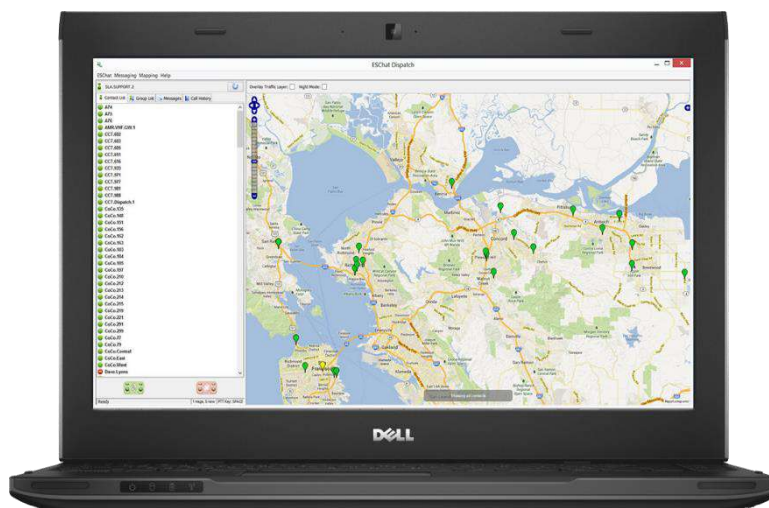
In-Call List



In-Call Map



Group Messaging



PC Dispatch Client



Groups Tab



Map Tab

Additional Features

- AES-256 Voice & Data Encryption
- Group and User
- Floor Control Indication
 - User and Group Management from: *Web based user interface, and Handset User Interface*
- Instant Ad Hoc Group Calling
- Enterprise Administration via Web Interface
- Online Knowledge Base
- Late Join & Re-Join on Group Calls
- CALEA Compliant PC Based Dispatch Client Available
- Easy to use Contact and Group Selection
- Cloud or Customer Hosted Options
- SDK Partner Program Available
- Live Customer Support
- Contact List Size: 895 Users
- Maximum Group Size:
 - *Personal Group:* 250
 - *Member Group:* 250
 - *Open Group:* 250
 - *Closed Group:* 250
 - *Dispatch Group:* 250
 - *Surveillance Channel:* 250
 - *Unicast Radio Channel:* 250
 - *Broadcast Group:* 60,000

KGC Document ID: K-Comm.2016.01.15-001 - C5.0a

K-Comm and the K-Comm logo are registered trademarks of San Luis Aviation, Inc.
 Windows and Active Directory are registered trademarks of Microsoft Corporation
 Android is a registered trademark of Google Inc.
 DROID is trademark of Lucasfilm Ltd.
 Apple, the Apple logo, iPhone, and Mac OS are trademarks of Apple Inc., registered in the U.S. and other countries
 Dell is a trademark of Dell, Inc.
 XP5, XP6 and XP7 are registered trademarks of Sonim Technologies.



Exloc Instruments, Inc.
 15584 Summit Park Dr., Suite 303
 Montgomery, TX 77356
 (281) 978-2040
 www.exloc.com