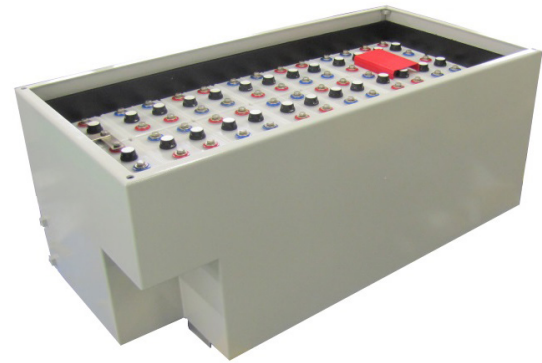
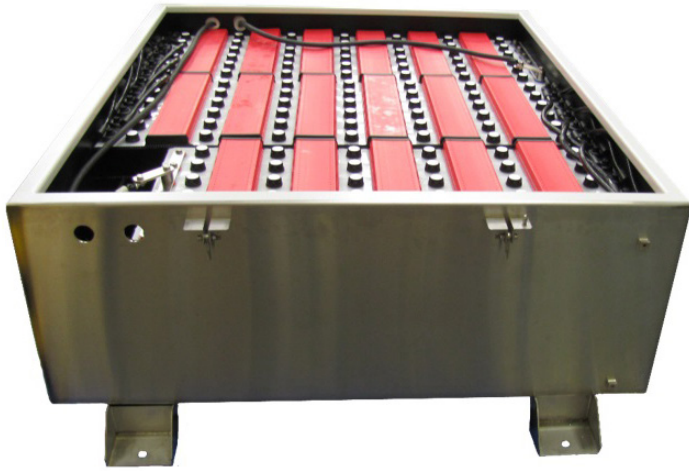


# TECHNICAL DATASHEET



## iBATT SXX

### A stainless steel universal battery enclosure system for Zone 1 hazardous areas

Scalable solution, tailored to your application

Choose your preferred batteries - can be used to deploy lead acid, nickel cadmium, or nickel iron batteries

ATEX and IECEx Zone 1 and 2 certified

Designed for industrial back up power

Includes up to 36 battery cells of your choice

Highly rugged and durable

Flexible charging, in safe area or in hazardous area

Available in a size and shape to meet your requirements

Designed for use in industrial environments

Use standalone or in conjunction with UPS solutions, such as iUPS101

[www.extronics.com](http://www.extronics.com) | [info@extronics.com](mailto:info@extronics.com) | +44 (0) 845 277 5000


414913(3)

Disclaimer: Copyright (c) Extronics Ltd. The information contained in this document is subject to change without notice. Extronics cannot be held responsible for any errors or inaccuracies within this document.

Extronics Released

# SPECIFICATION



Certification	 II 2 G Ex e IIC T6 Gb
Housing	316L stainless steel
Ingress protection rating	IP43 (Ex rating), IP56 (on request)
Dimensions	Up to maximum 1810 x 1610 x 700 mm
Capacity	Up to maximum 2500 Ah
Batteries	Up to 36 rechargeable cells of lead-acid, nickel-iron, or nickel-cadmium
Connections	Via ATEX/IECEX approved Ex e cable glands, in accordance with the requirements of EN 60079-14
Ambient temperature range	-40°C to +55°C (dependent on battery type)
Charge voltage	Dependent on battery type
Maximum charge current	Dependent on battery type
Charging environment	Hazardous or safe area
Lid	Hinged or lift off

Email [info@Extronics.com](mailto:info@Extronics.com) or call +44 845 277 5000 to find out more information or request a quotation for an iBATT5xx.

# EXAMPLE iBATT5xx



Certification	Ex II 2 G Ex e IIC T6 Gb
Housing	316L stainless steel
Ingress protection rating	IP43
Dimensions	1618 x 1417 x 676 mm
Weight	1750 kg
Capacity	24V, 1700 Ah
Batteries	20 x 1.2V rechargeable NiCad cells
Connections	Via ATEX approved Ex e cable glands, as per EN 60079-14
Ambient temperature range	-40°C to +55°C
Charge voltage	1.45 ± 0.01 V/cell
Maximum charge current	170 A
Charging environment	Hazardous or safe area
Lid	Lift off

